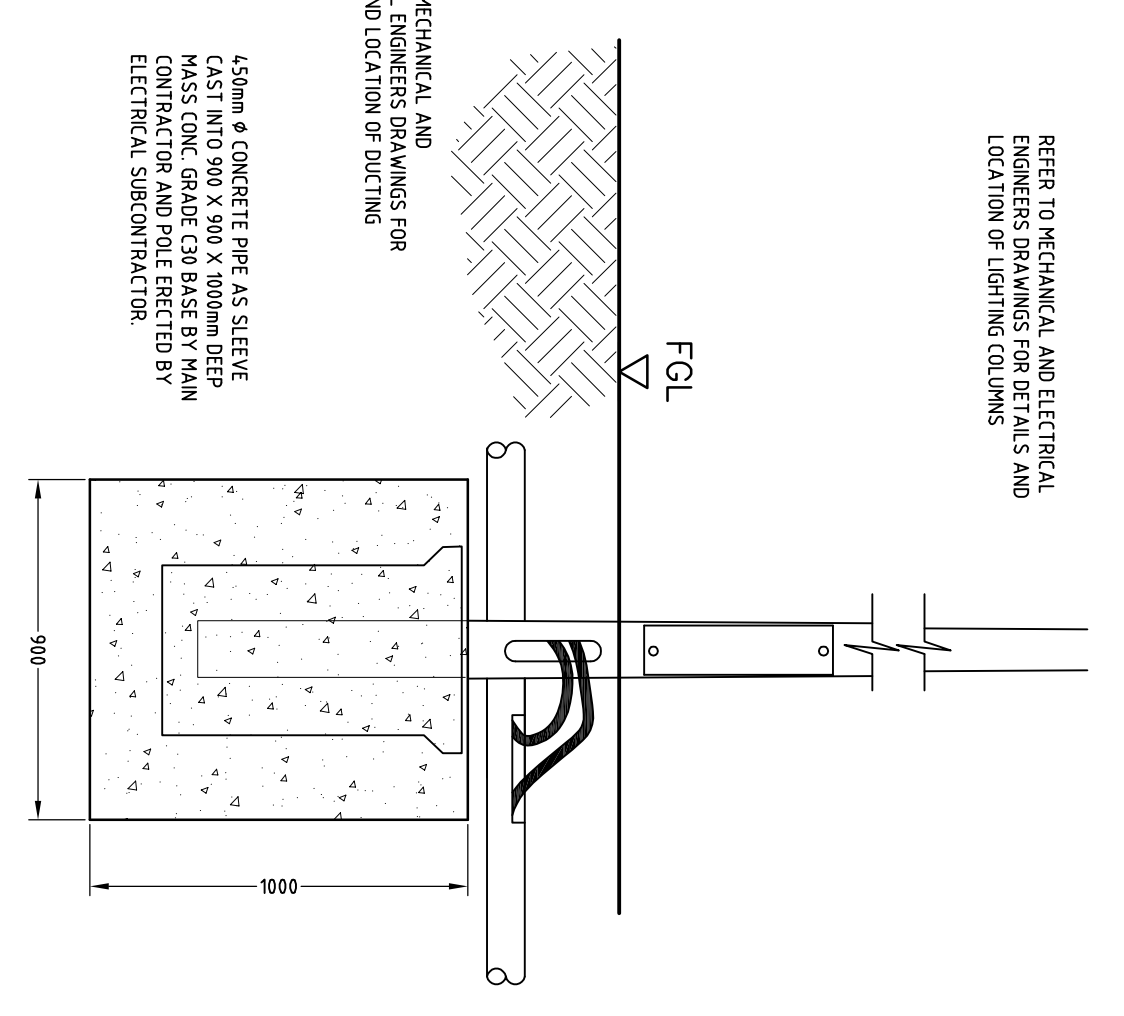
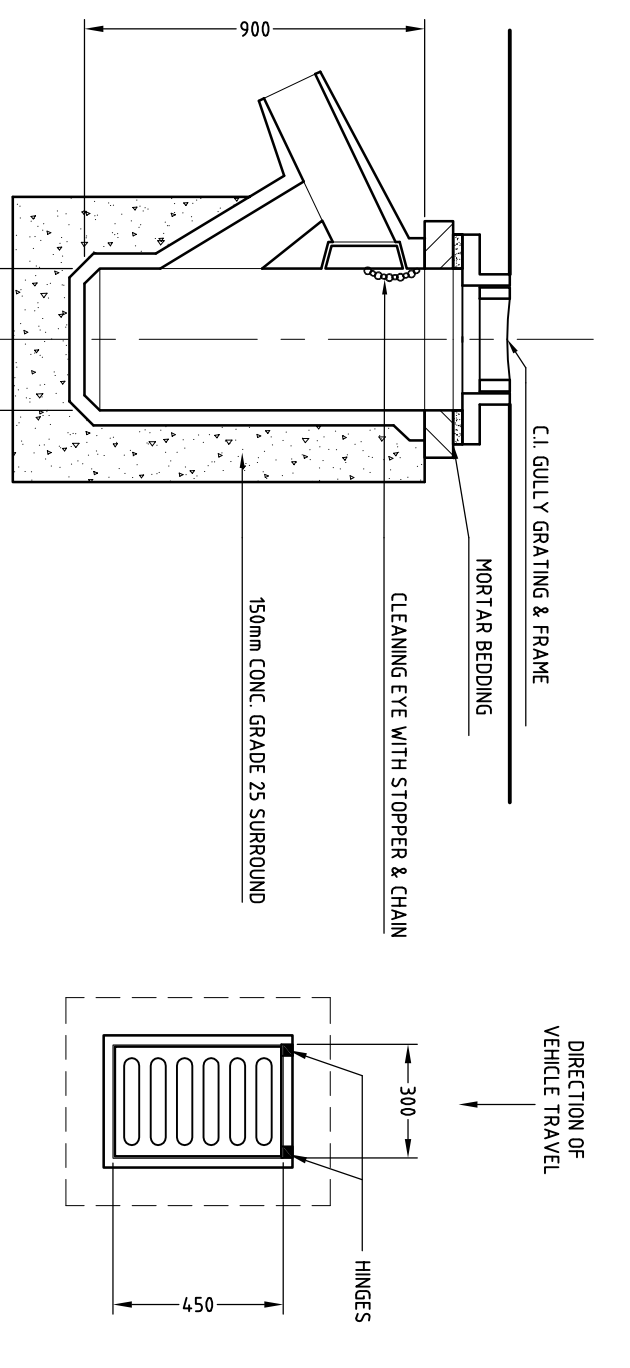


REFER TO MECHANICAL AND ELECTRICAL ENGINEERS DRAWINGS FOR DETAILS AND LOCATION OF LIGHTING COLUMNS



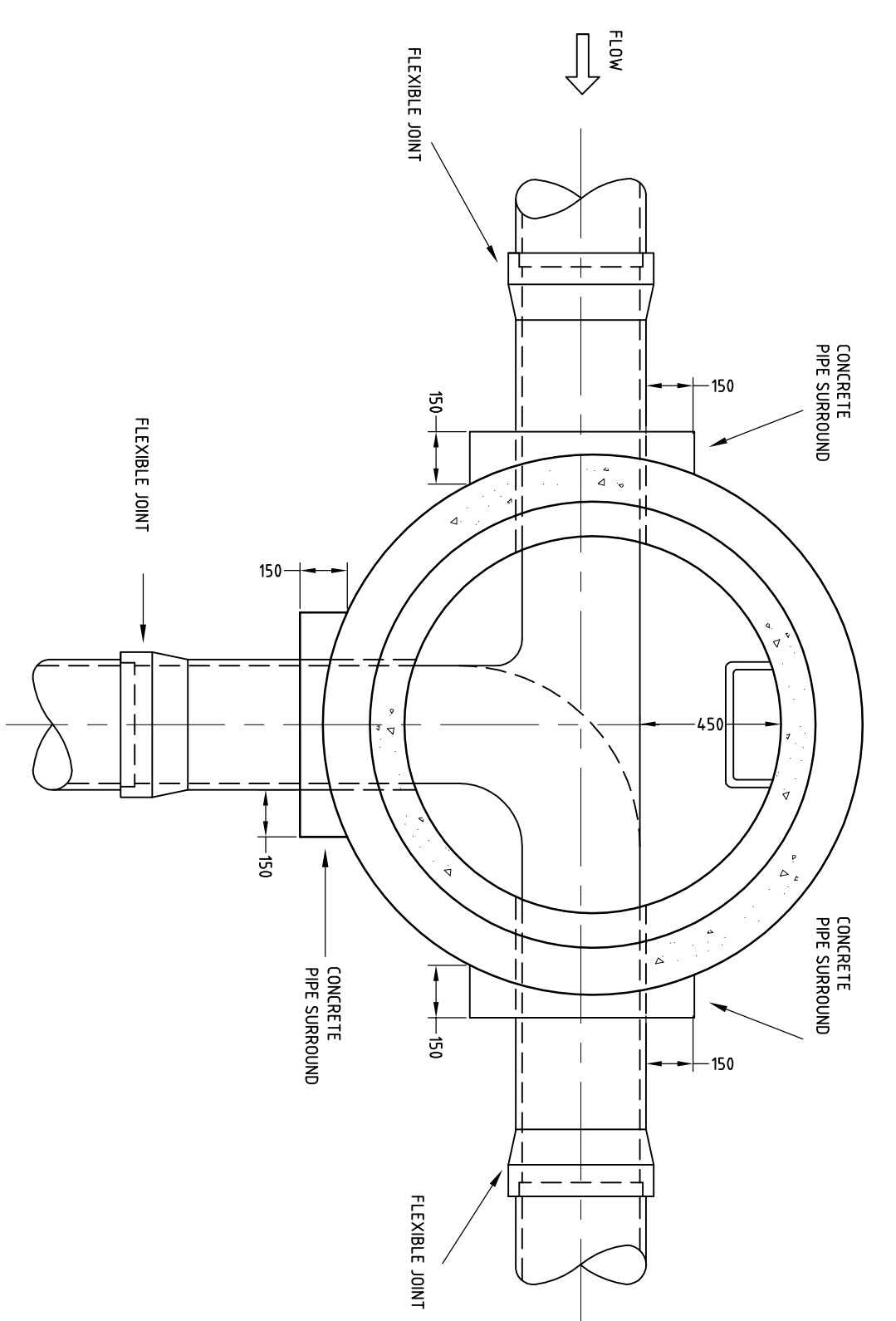
NOT TO BE USED FOR CONSTRUCTION



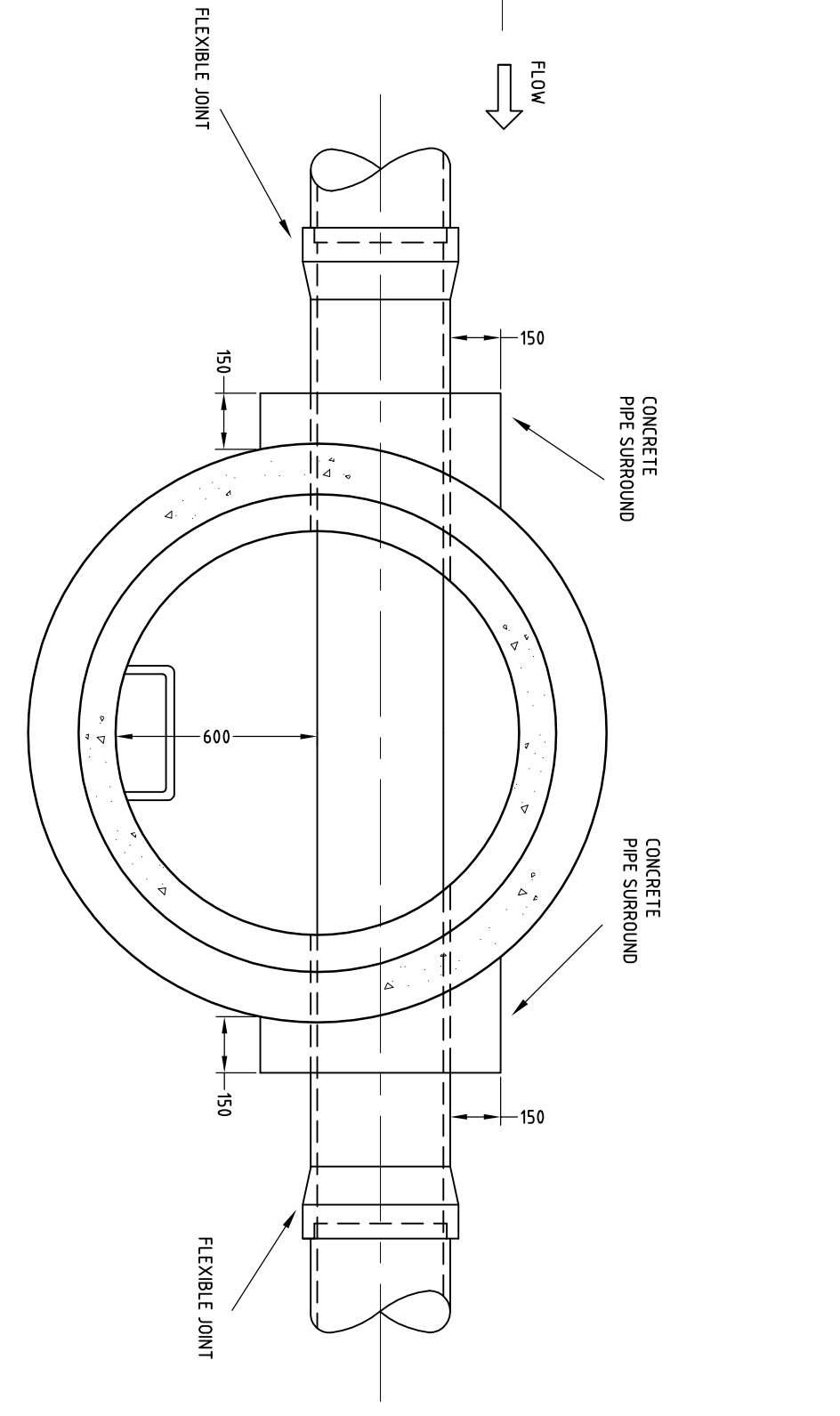
PRECAST CONCRETE ROAD GULLY
SCALE 1:20

TABLE No.2

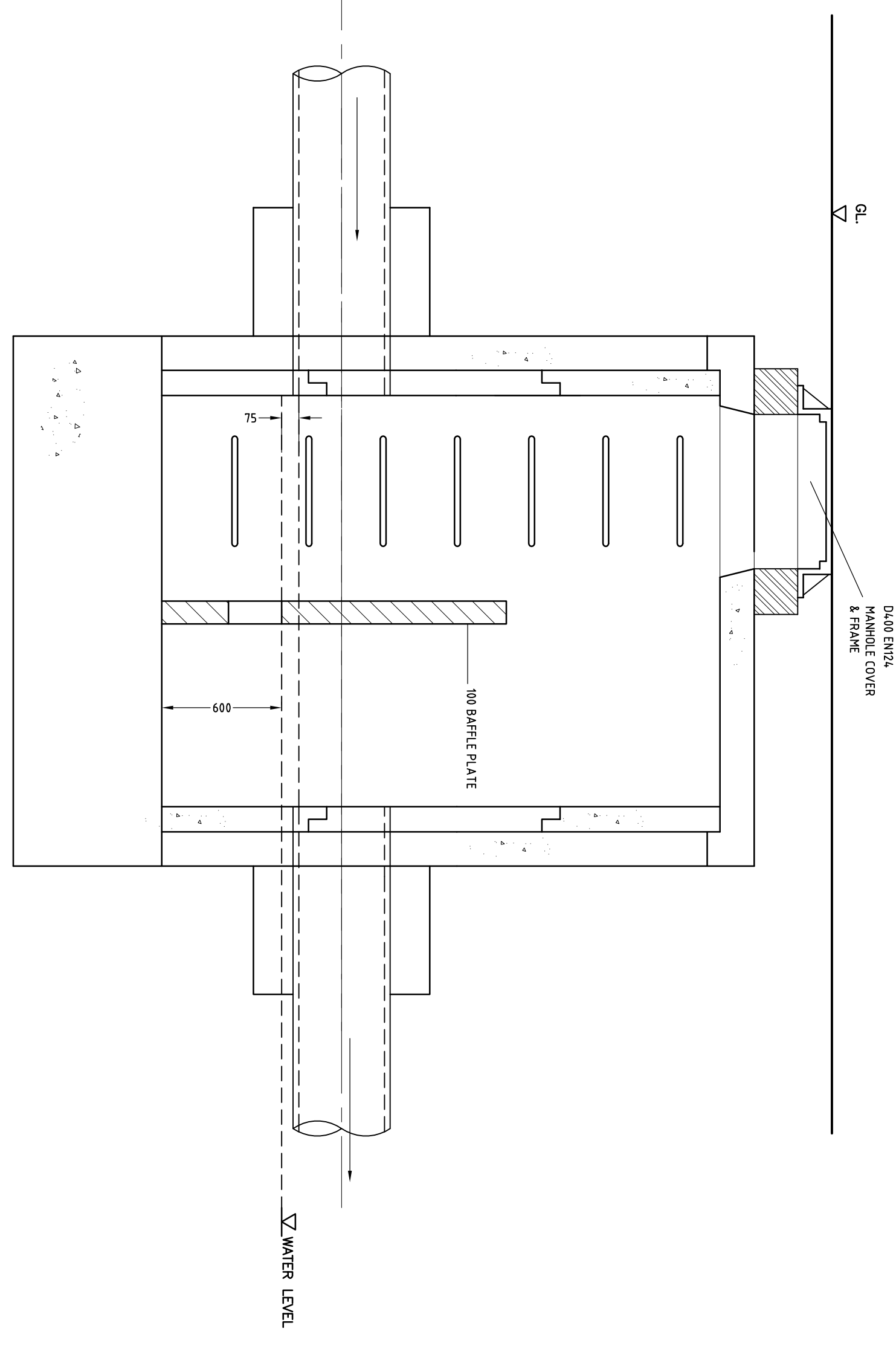
Diameter of largest pipe in manhole (mm)	Internal diameter of manhole (mm)
Less than 375	1200
375 - 450	1350
500 - 700	1500
750 - 900	1800



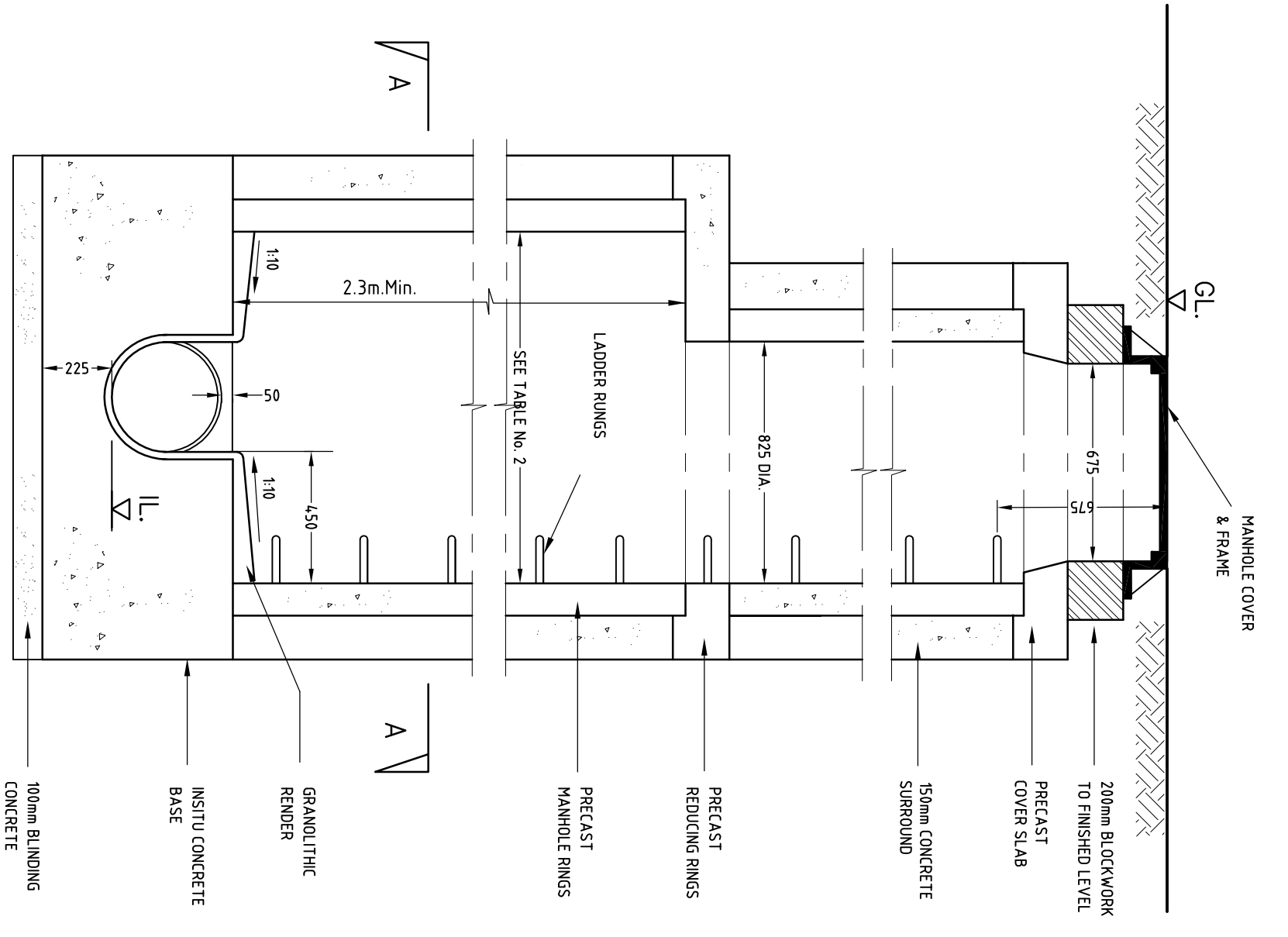
SECTIONAL PLAN A-A
(JUNCTION MANHOLE OR ANGLE - 45°)



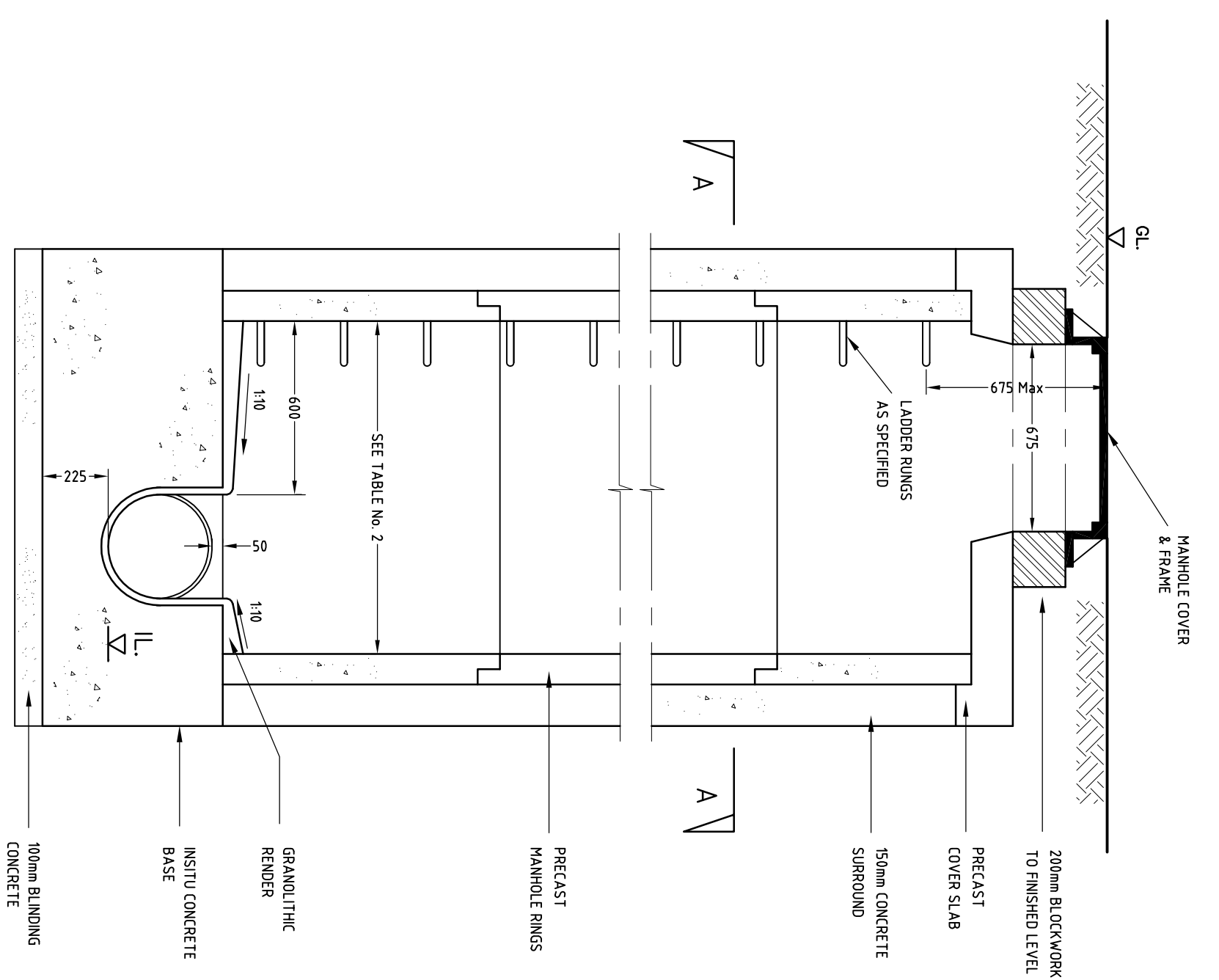
SECTIONAL PLAN A-A
(STRAIGHT THROUGH OR ANGLE - 45°)



CATCHPIT/GRIT REMOVER
MANHOLE DETAILS AS PER DRAWING XXXX
NOT TO SCALE



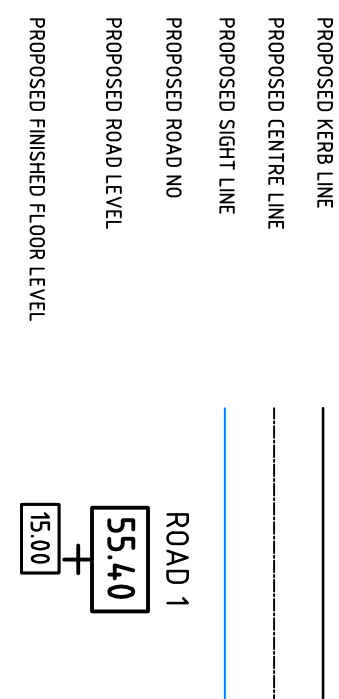
TYPE A MANHOLE
DEPTH FROM G.L. TO SOFFIT OF PIPE 3.0 TO 6.0m



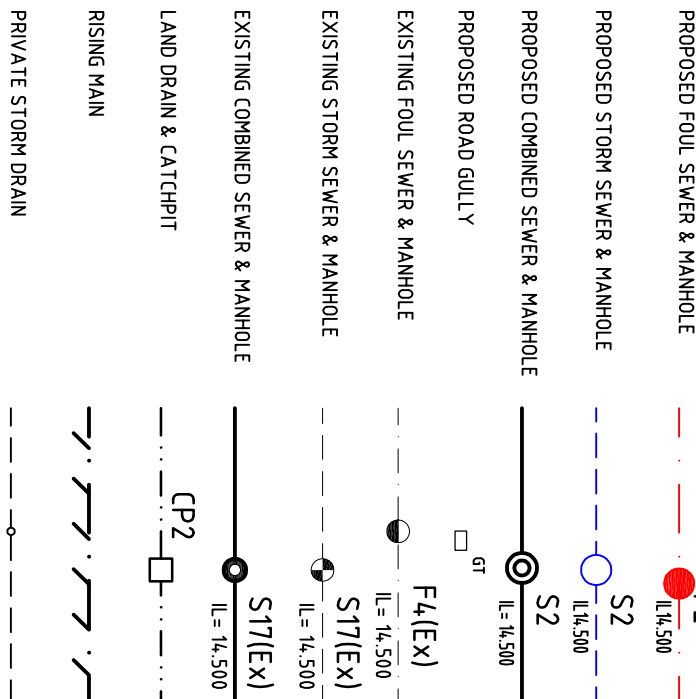
SURFACE WATER MANHOLE
DEPTH FROM G.L. TO SOFFIT OF PIPE 3.0m

THIS DRAWING IS COPYRIGHT - ELECTRONIC DRAWING FILE NOTES:

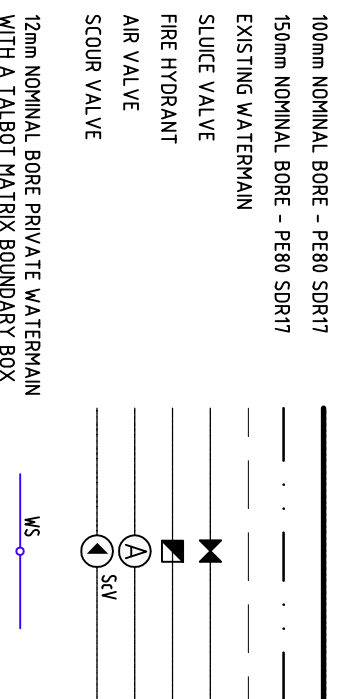
ROADS LEGEND



DRAINAGE LEGEND



WATERMAIN LEGEND



LINE MARKING

- L1 = 200mm THICK CONTINUOUS WHITE (RBM 071)
 - L2 = 100mm THICK CONTINUOUS WHITE (RBM 071)
 - L3 = 100mm THICK DOUBLE CONTINUOUS YELLOW (RBM 026)
 - STOP MARKING (M14)
 - STOP SIGN (RIS 027)
- ALL MARKINGS AND SIGNS TO BE IN ACCORDANCE WITH D01 TRAFFIC SIGNS MANUALS CHAPTERS 5, 7 & 10.

1. ALL HOSE BRANS TO BE 100mm
2. LOCAL BRANS TO RUN AT A GRADIENT OF 1/40 UNLESS OTHERWISE NOTED
3. DOUBLE GULLIES TO BE PROVIDED AT ALL ROAD SAID CURVES & TOL DE SACS
4. ALL GULLIES TO BE PROVIDED AT ALL ROAD SAID CURVES & TOL DE SACS
5. ALL GULLIES TO BE PROVIDED AT ALL ROAD SAID CURVES & TOL DE SACS
6. HOUSE BRANS SHALL NOT PASS THROUGH A PROPERTY THEY DO NOT SERVE
7. PRIVATE DRAINAGE SYSTEMS SHALL BE DRAINING TO SEWER
8. PRIVATE DRAINAGE SYSTEMS SHALL BE DRAINING TO SEWER
9. PRIVATE DRAINAGE SYSTEMS SHALL BE DRAINING TO SEWER
10. PRIVATE DRAINAGE SYSTEMS SHALL BE DRAINING TO SEWER
11. PRIVATE DRAINAGE SYSTEMS SHALL BE DRAINING TO SEWER
12. PRIVATE DRAINAGE SYSTEMS SHALL BE DRAINING TO SEWER
13. PRIVATE DRAINAGE SYSTEMS SHALL BE DRAINING TO SEWER
14. PRIVATE DRAINAGE SYSTEMS SHALL BE DRAINING TO SEWER
15. PRIVATE DRAINAGE SYSTEMS SHALL BE DRAINING TO SEWER
16. PRIVATE DRAINAGE SYSTEMS SHALL BE DRAINING TO SEWER
17. PRIVATE DRAINAGE SYSTEMS SHALL BE DRAINING TO SEWER
18. PRIVATE DRAINAGE SYSTEMS SHALL BE DRAINING TO SEWER
19. PRIVATE DRAINAGE SYSTEMS SHALL BE DRAINING TO SEWER
20. PRIVATE DRAINAGE SYSTEMS SHALL BE DRAINING TO SEWER

PHM consulting
Civil - Structural - Environmental
11 Ardara Street, Liverpool, Merseyside, L15 4JH, UK
Tel: +44 (0)151 3762020 Email: info@phm.co.uk Web: www.phm.co.uk

Revington Developments Ltd.

PROPOSED RESIDENTIAL DEVELOPMENT AT PA HEALY ROAD, LIVERICK DRAINAGE DETAILS

SHEET 1 OF 2

Rev	Date	By/CHKD/APP	Description
1	07/2021		

Scale	AS SHOWN	Sheet Number	109-96
Author	AS SHOWN	Client	Revington Developments Ltd.
Checker	AS SHOWN	Project Number	402
Approver	AS SHOWN	Revision	A1